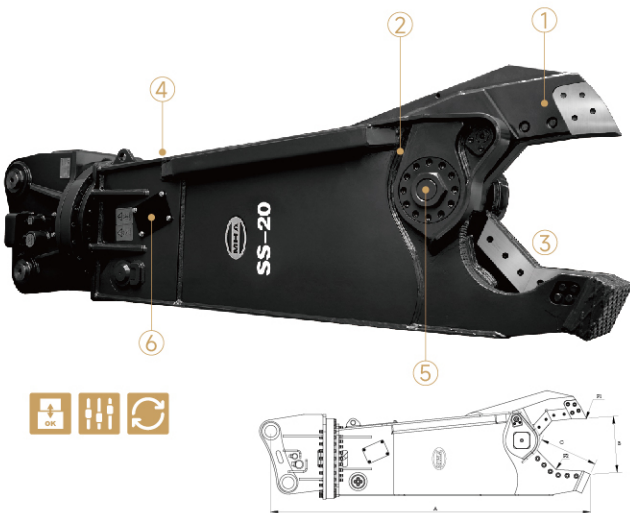


FEATURES

JULY 2024



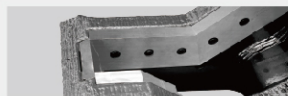
1 PENETRATION TOOTH

Equipped with a special fastening system that increases its resistance and durability. It is inter-changeable and easily replaceable.



2 NEW GUIDE PADS

Double, one per side, substantially reduces the jaw flexion, ensuring high precision and increasing cutting efficiency over time.



3 CUTTING BLADES

Which can be turned 4 times before replacement.



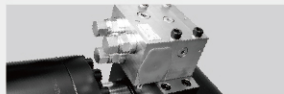
4 HIGH PERFORMANCE CYLINDER

The high bore offers great cutting power. Reverse mounted, it guarantees a high protection of the cylinder rod from accidental blows or damage.



5 SHRINK-FIT FULCRUM TECHNOLOGY

The new system always ensures the optimum alignment of the mobile jaw with the fixed one, thus ensuring the best performance while maintaining the best possible cutting precision over time.



6 SPEED VALVE

Reduces cycle times through an oil regeneration circuit by means of a so called speed valve mounted on the cylinder.



+86 13601643237



info@mhaconstructionequipment.com



www.mhaconstructionequipment.com



No.28,Zhenxing Road,Changzhou,Jiangsu



MHA Construction Equipment

MHA Eagle Shear



EAGLE SHEAR

Overall Length
1810MM



SS-06



- + Suitable Carrier (Arm) 4-6TON
- + Suitable Carrier (Boom) 6-10TON
- + Weight 530KG
- + Max. Opening 350MM
- + Crushing Force at Tip A 390KN
- + Crushing Force at Tip B 620KN

Overall Length
2700MM



SS-20



- + Suitable Carrier (Arm) 14-20TON
- + Suitable Carrier (Boom) 20-30TON
- + Weight 2150KG
- + Max. Opening 510MM
- + Crushing Force at Tip A 850KN
- + Crushing Force at Tip B 1480KN

Overall Length
2300MM



SS-12



- + Suitable Carrier (Arm) 8-12TON
- + Suitable Carrier (Boom) 13-17TON
- + Weight 1180KG
- + Max. Opening 450MM
- + Crushing Force at Tip A 600KN
- + Crushing Force at Tip B 1050KN

Overall Length
3150MM



SS-30



- + Suitable Carrier (Arm) 18-25TON
- + Suitable Carrier (Boom) 25-35TON
- + Weight 3300KG
- + Max. Opening 630MM
- + Crushing Force at Tip A 1175KN
- + Crushing Force at Tip B 2250KN